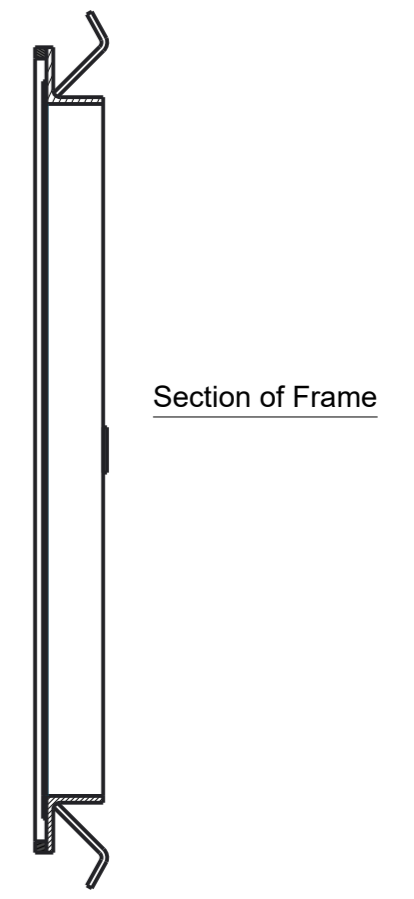
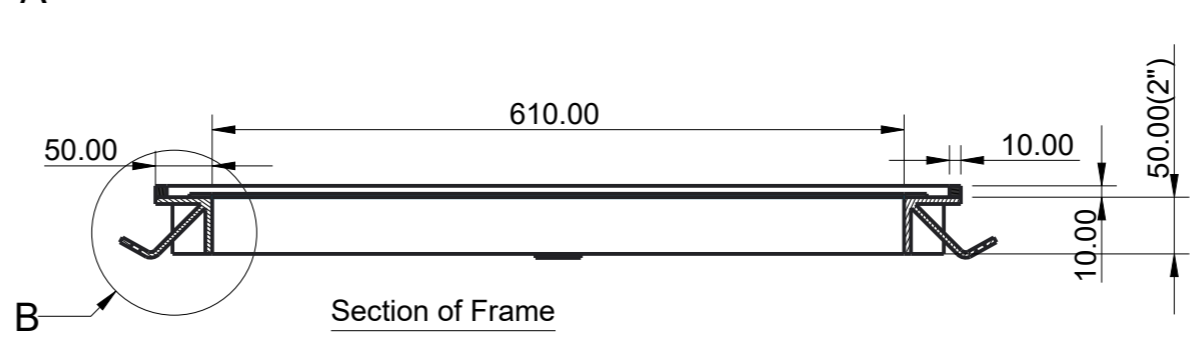
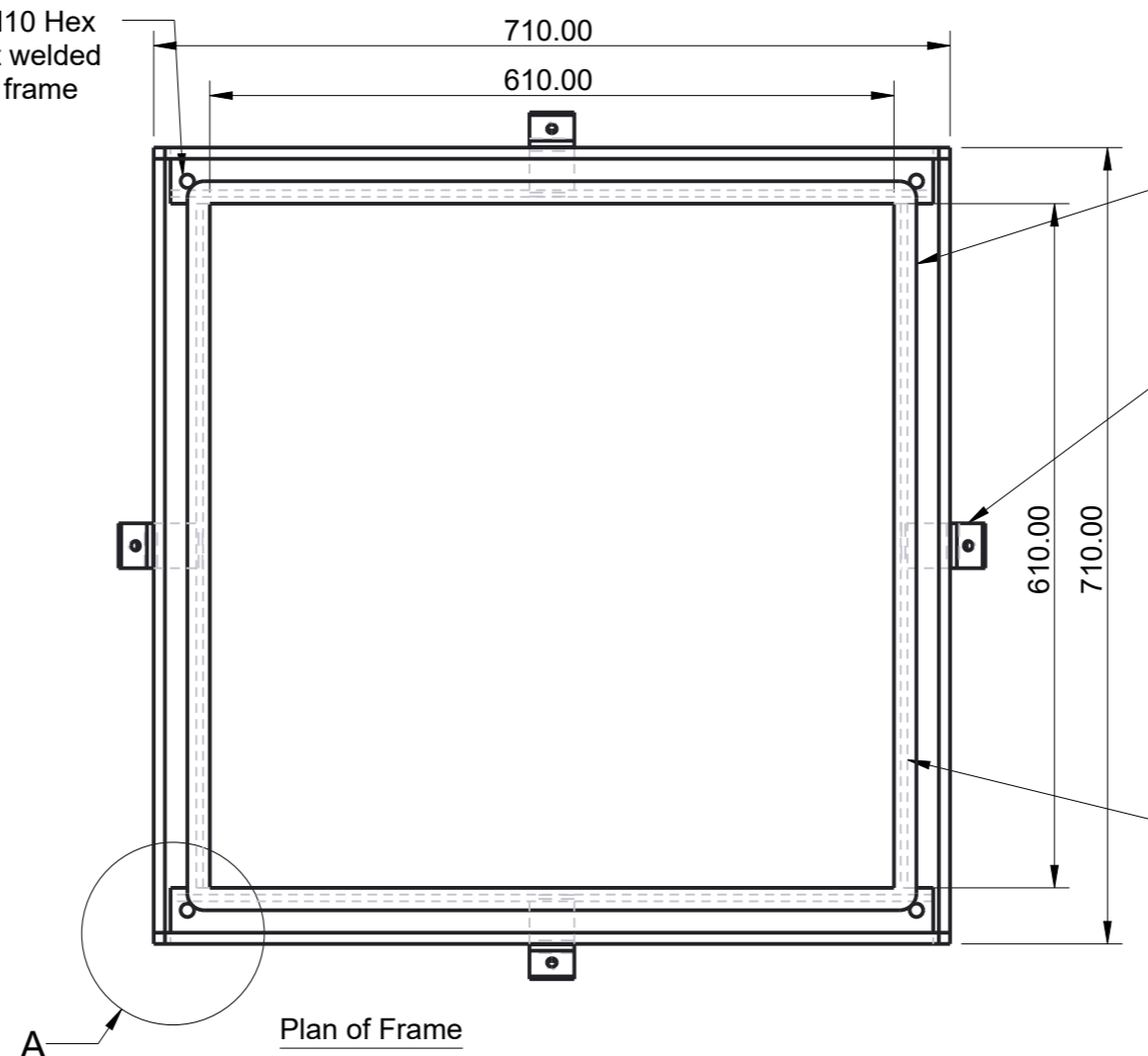
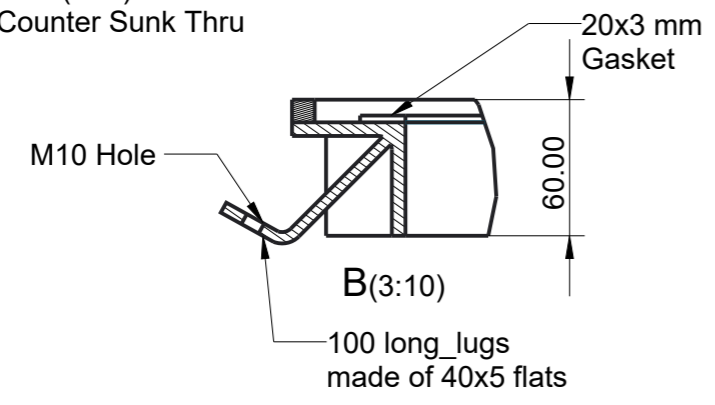
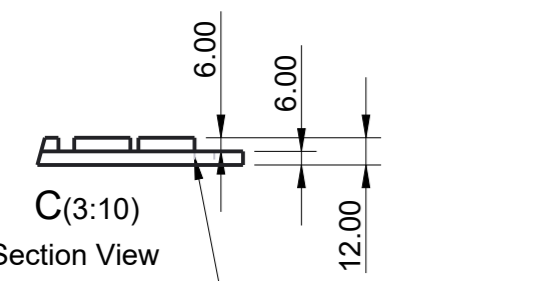
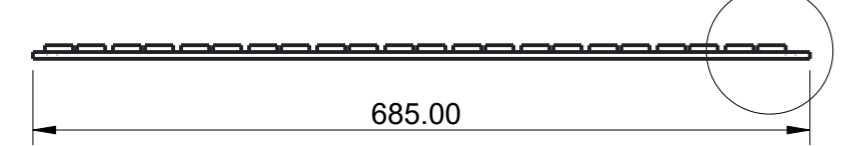
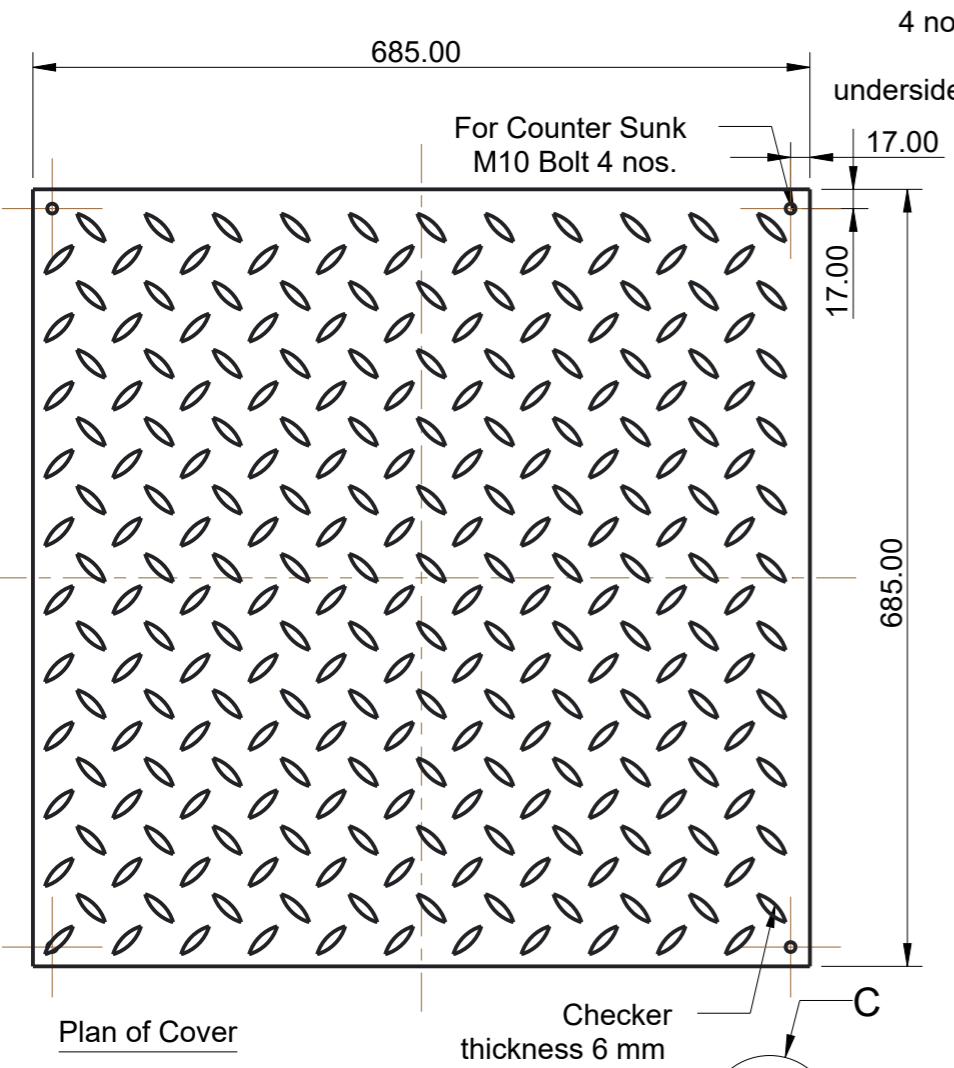


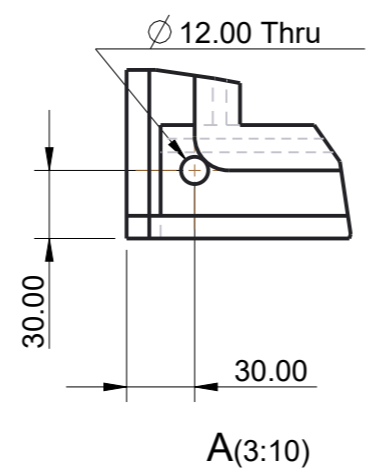
IF ANY DOUBT, PLEASE ASK





SECTION B-B

Note:- Bolt down PROMSION M10 (3/8") CSK TYP
Welded Hex Nut at under side of frame

ALL DIMENSIONS ARE IN MM.



| | | | | |
|--------------|-------------|-------------|---|--|
| REV NO. | DATE | | | |
| | SIGN | DATE |  APG Castings Inc. Suite 232, 14-3650 Langstaff Rd, Woodbridge, ON, L4L 9A8 | |
| DRAWN | T.JANA | Nov-05-25 | | |
| CHKED | M.GANGULY | Nov-05-25 | TITLE: M.S. Solid top cover & frame C/O - 610x610x60 mm | |
| QA | | | SCALE:  | DWG NO. LOAD RATING PAINT |
| MFG | | | | |
| APPRVD BUYER | | | SHEET | |
| ESTMTD. WT. | | | | |