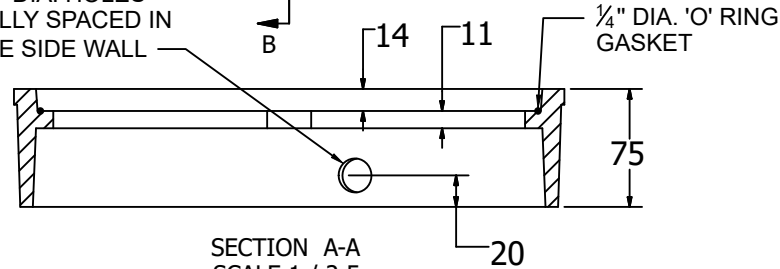


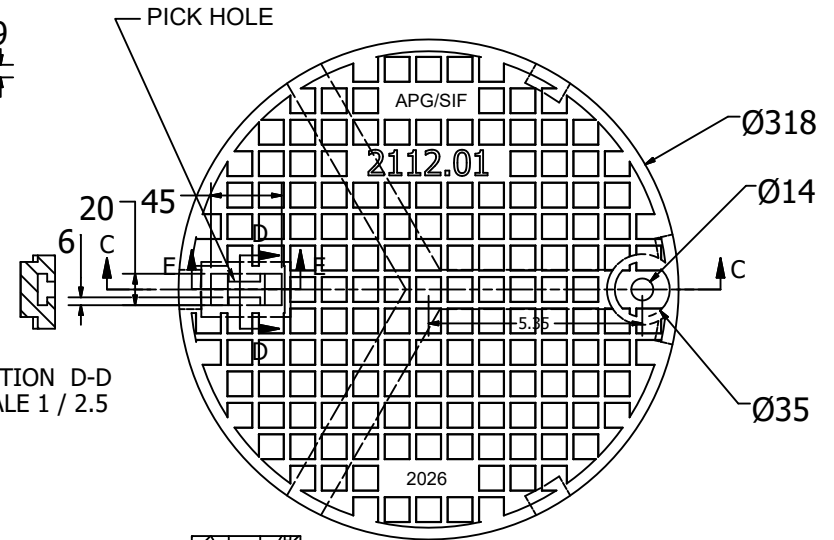
(3) 7/16" DIA. HOLES EQUALLY SPACED IN FRAME SIDE WALL



SECTION B-B
SCALE 1 / 2.5



SECTION D-D
SCALE 1 / 2.5



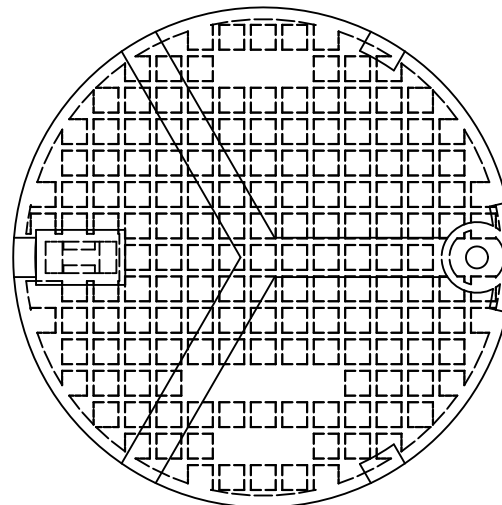
SECTION E-E
SCALE 1 / 2.5


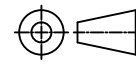


SECTION C-C
SCALE 1 / 2.5

NOTE:-

1. 1/2"-13 HEX HD SS CAP SCREW W/ 1/2" ZINC PLTD WASHER.
2. Material: Cast Iron ASTM A48 CL30B
3. Tolerance should be ±0.0625", unless otherwise specified.
4. All Dimension are in Millimeter unless otherwise shown.



REV. NO	DATE	SIGN	DATE	 <p>APG Castings Inc. Suite 232, 14-3650 Langstaff Road, Woodbridge, ON, L4L 9A8</p>				
DRAWN	T.JANA	17.10.2025						
CHECKED	M. GANGULY	17.10.2025						
QA								
MFG				TITLE :- OPSD 2112.01				
APPRVD BUYER				SCALE NTS	 <p>THIRD ANGLE</p>	DWG NO :-	Material:- CAST IRON	
ESTMTD. WT						LOAD RATING :	PAINT: BLACK BITUMEN	SHEET : 1 OF 1