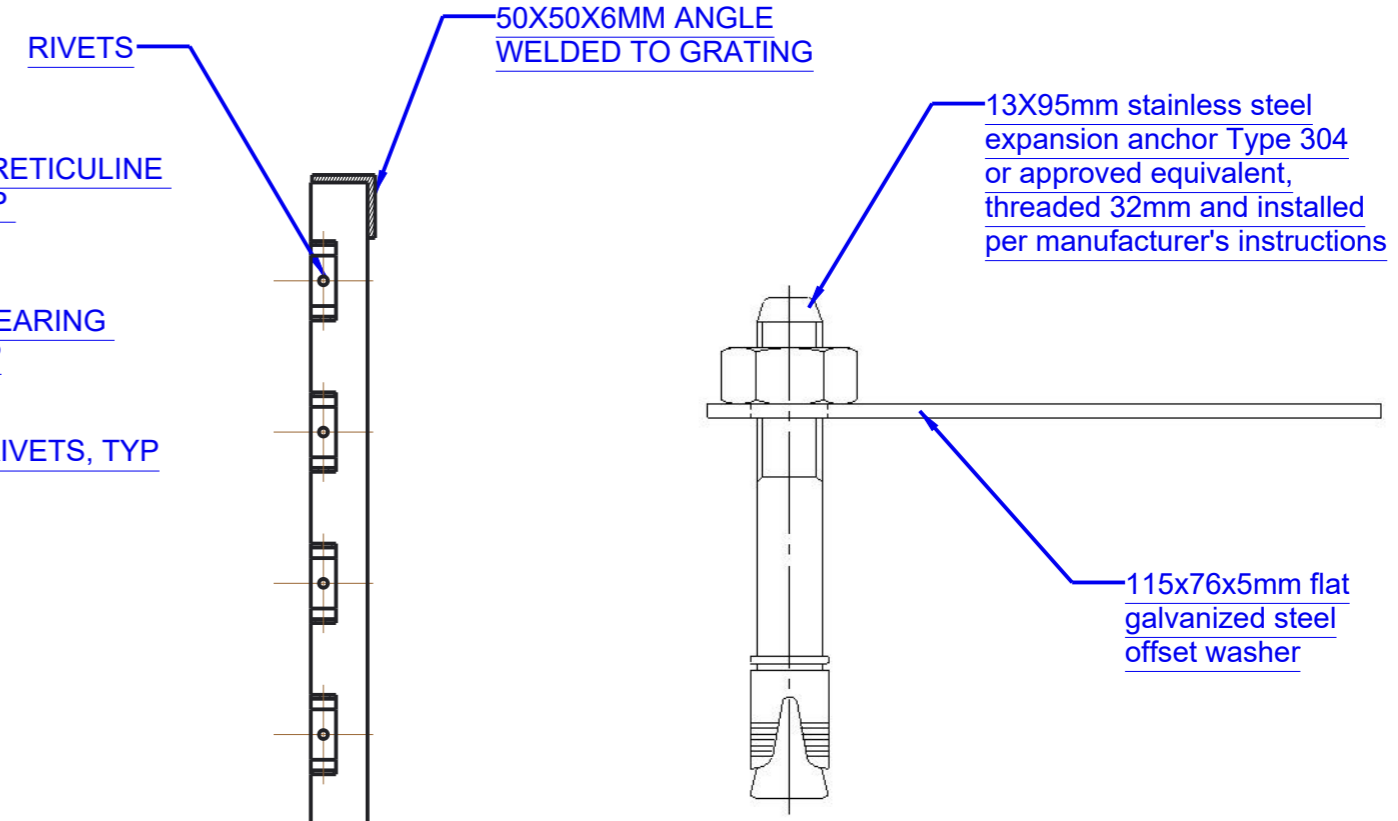
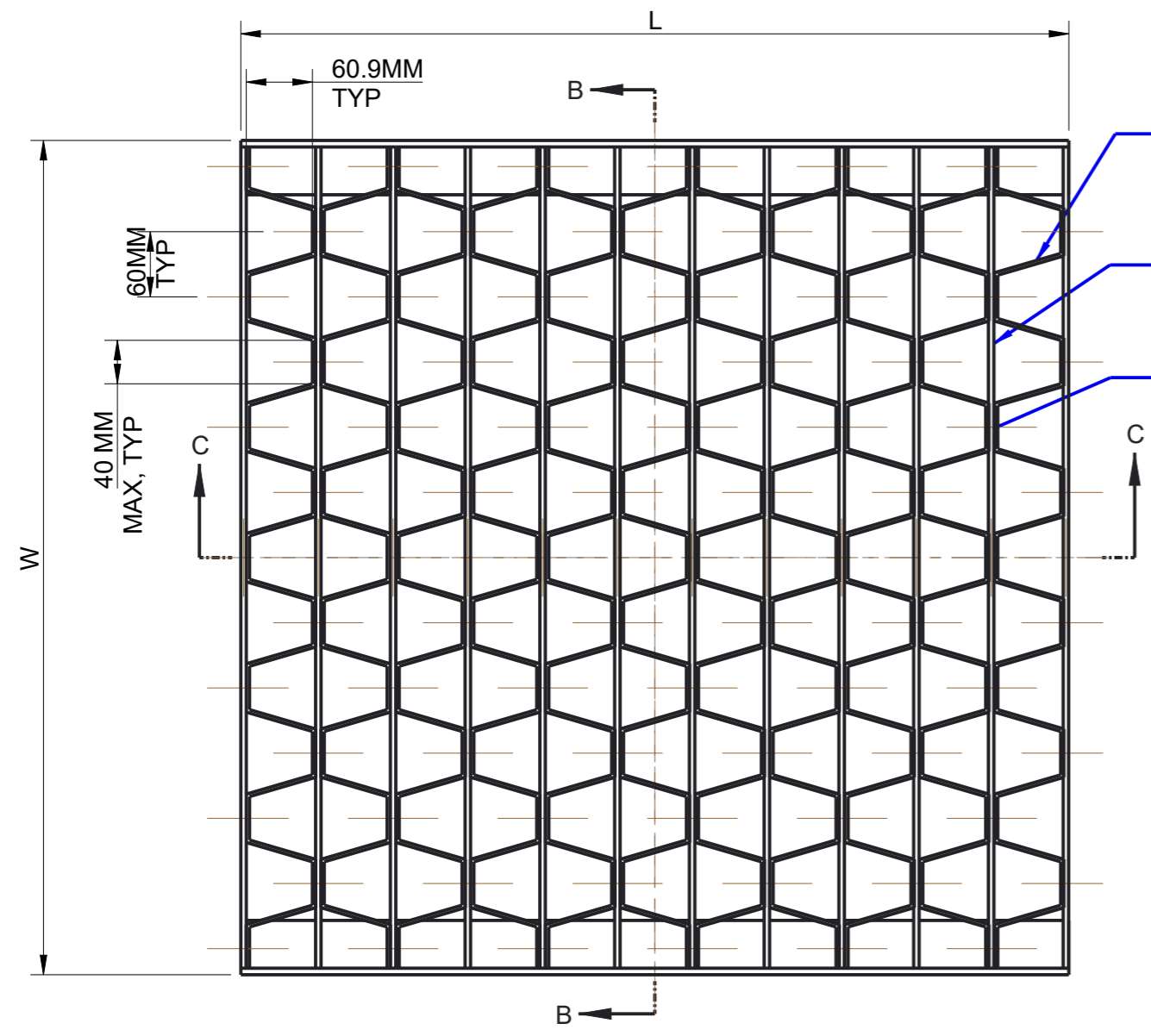
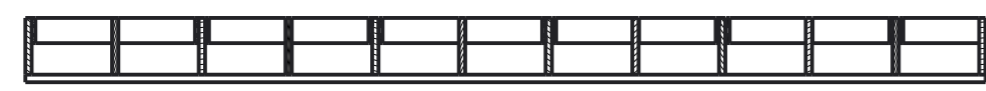


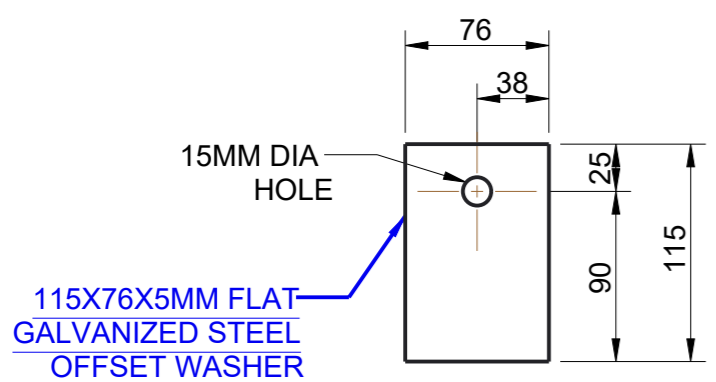
IF ANY DOUBT, PLEASE ASK



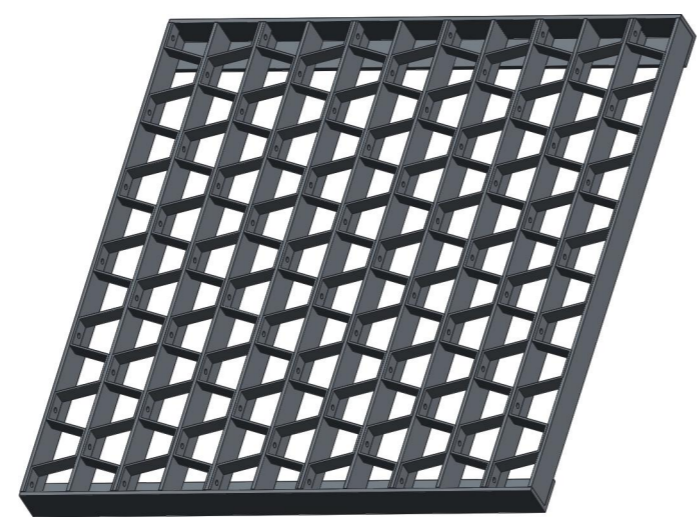
FASTENER DETAIL PER SET 2 NOS.



SECTION C-C





OFFSET WASHER DETAIL PER SET 2 NOS.



- NOTES:
1. ALL STEEL MEMBERS SHALL BE HOT DIPPED GALVANIZED AFTER FABRICATION.
 2. WELDING SHALL CONFORM TO CSA W47.1 & W59 LATEST EDITION .
 3. WELDED SURFACE REMAIN AS WELDED.

ALL DIMENSIONS ARE IN MM.

GRATING TYPE	GRATING SIZE	
	LENGTH 'L'	WIDTH 'W'
A	762	768
B	1338	768
C	1465	768

REV NO.	DATE	SIGN	DATE		APG Castings Inc. Suite 232, 14-3650 Langstaff Road, Woodbridge, ON, L4L 9A8			
DRAWN	T.JANA	Nov-17-22	Nov-17-22					
CHKED	M.GANGULY	Nov-17-22	Nov-17-22		TITLE: 403.010 GRATE			
QA								
MFG								
APPRVD					SCALE: NTS		DWG NO.	MATERIAL
BUYER					ESTMTD. WT.		LOAD RATING	PAINT